

Lassen Peak (10,437 ft.), made some minor climbs in the Salmon River Mts. of Northern California, ascended Mt. Moran (Grand Tetons) for the second time, and traversed it. Mr. J. Ellis Fisher is at the present moment on his way to Chamonix for some winter climbing.

The fifth Dinner will be held in Boston early in May 1923.

H. B. DE VILLIERS-SCHWAB,

Hon. Sec.

11, Broadway, New York City.

IN MEMORIAM.

EDWARD ROBSON WHITWELL.

1843-1922.

ANOTHER of the veterans, whose name often occurs in our earlier annals, started on the long trail on October 14.

Born at Sunderland, January 27, 1843, Mr. Whitwell married in 1873 Mary Janet, daughter of the late E. A. Leatham, M.P., of Misarden Park, Gloucestershire. She, with two sons and three daughters, survives him.

A man of great enterprise and an indefatigable worker, his business interests lay mainly in coal-mining, and he was Chairman and Vice-Chairman of important Collieries.

He was a D.L. and J.P. for the county of Durham, well known with the Zetland and Harworth hounds, a good deer-stalker, and in his later years a keen yachtsman, becoming a member of the R.Y.S.

Mr. Whitwell was elected to the Club in 1868. In 1870, as he has recounted in *ALPINE JOURNAL* v, vi, and vii, he was a member of Mr. Tuckett's Tyrolese party and made, with C. Lauener and Santo Siorpaes, the first ascent of the Cimone della Pala by the N. face, a route dangerous from stones and now seldom taken, the first ascent of the Croda Rossa from Val Buones direct to the summit, a route since taken probably but once and then in descent, and the first ascent of Piz Popena. An attempt on the Pale failed.

In 1871 and 1872 he had the services of Christian and Ulrich Lauener on journeys of three and four weeks' duration. Their expeditions were among the most notable of the time, and in the epitome of Ulrich's *Führerbuch*, *ALPINE JOURNAL*, xxx. 301 *seq.*, I dealt with them at considerable length, and reproduced portraits of both Mr. Whitwell and Ulrich. In the same volume, 168 *seq.*, Mr. Whitwell gave us interesting reminiscences of early attempts on the Géant and Dru.

His two greatest ascents were made in 1874, when, with Christian

Lauener and his son Johann, he made the first ascent of the Central peak of the Blaitière and an ascent of the Dent Blanche by the E. face, a route probably not since taken. This unfortunate mountain, reputed the hardest of the Pennines in my early days, now has not less than nine routes or variations up its flanks and ridges!

Mr. Whitwell's climbing days ended in 1878 when other pursuits absorbed his energies, but he remained to the end of his life keenly interested in our doings.

J. P. F.

M. A. BAYFIELD.

1852-1922.

THE Rev. Matthew Bayfield died at Hertingfordbury Rectory, Hertford, on August 2, 1922.

He was a Scholar of Clare College, Cambridge, and took a First Class in the Classical Tripos of 1875. He held Assistant-Master-ships at Marlborough, Malvern, and Brecon, and when first I knew him had become Headmaster of Eastbourne College. A Classical scholar of originality, and of almost international repute, he edited many texts, chiefly Greek, and collaborated with Professor Verrall and Dr. Leaf.

In a sympathetic obituary notice in the *Times* he was described as a 'many-sided man.' An accomplished linguist, a lover of music and of literature, he was best known, in later years, for his ingenious commentaries upon the text of Shakespeare, and for his experiments, made in conjunction with Professor and Mrs. Verrall, in thought transference. He was a Member of the Council of the Society for Psychical Research. His later works, 'The Measures of the Poets' and 'A Study of Shakespeare's Versification,' were published by the Cambridge University Press in 1919 and 1920.

During the War he lost his wife, and later his only son, a promising naval officer who went down in the *Black Prince*. Hard work remained his only solace. He continued at his books even during his own illness, and performed his parish duty with a cheerful courage invaluable as an example. His last note to myself, written with a pencil, after months of painful illness, contained, characteristically, an appreciation of the facsimiles of Milton's early poems, which I had formerly given him, and expressed his triumph in the confirmation which they afforded him for his theory of Shakespearian 'abbreviations' as a continuous literary tradition.

Bayfield was elected a Member of the Alpine Club in 1875. He did much of his early mountaineering with the late Rev. Arthur Fairbanks, to whose school of finished icemen he belonged. He carried the short light axe invented by Fairbanks, and which has

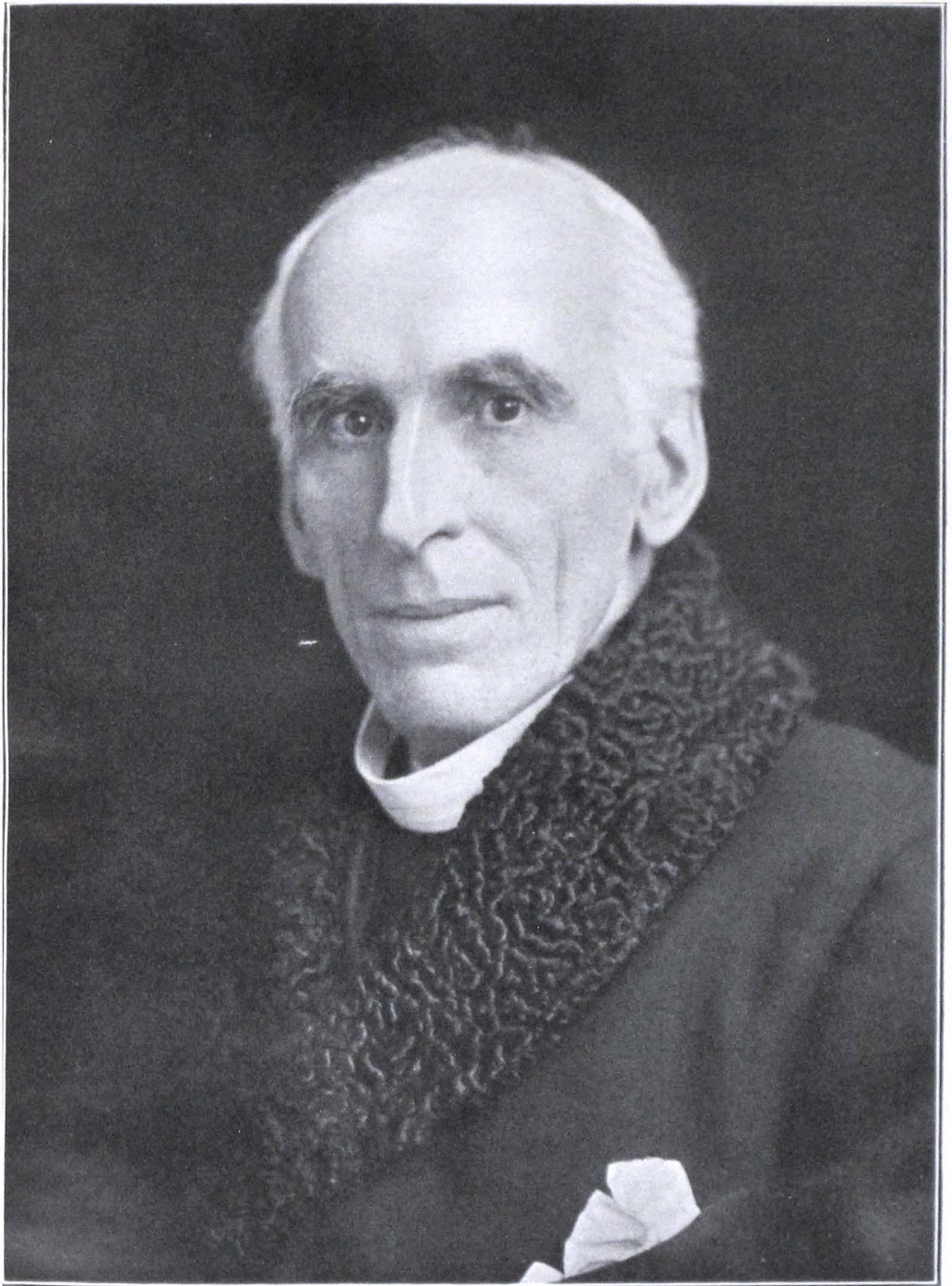


Photo Elliott and Fry.

THE REV. MATTHEW BAYFIELD

lately been revived for use with crampons—although crampons he himself would never wear. Of short stature, he had the perfect balance of the trained gymnast, and to see him and Geoffrey Young on the Great Aletsch Glacier, doing standing glissades in competition down steep slopes of hard ice, was some excitement for the onlooker. On rocks he was superb, climbing, even in middle age, with a rapidity and a perfection of balance unsurpassed by any amateur of his time. Long tramping fatigued him; and his list, therefore, of big Alpine expeditions can give little idea of his remarkable mountaineering gifts. But, even so, I can recall an ascent with him of the Jungfrau in deep snow, a traverse of Mont Collon, and a fatiguing tramp over Cader Idris.

He was little known to the Club. In his mountaineering, as in his studies and in his life, he had no desire for recognition. In all his interests he remained the scholar and the somewhat eclectic connoisseur, cultivated in taste, original in thought, and accomplished in performance. His enthusiasms—and among them his love of the mountains stood first—he reserved for the enjoyment of himself and of his friends. To them he has left the memory of many happy hours, spent in the company of a witty, brilliant, unusual, and very lovable personality.

G. E. W.

HENRY FOULKES KINGDON.

1862–1922.

HENRY FOULKES KINGDON, who died on August 7, 1922, was educated at Winchester. He entered the service of the Marine Insurance Company in 1883, and was appointed manager in 1918.

He was elected a member of the committee of Lloyd's Register of Shipping in 1920, and was chairman of the Institute of London Underwriters for 1921.

Mr. Kingdon had many interests, apart from marine underwriting. As a younger man he had been a keen mountaineer, and he was a member of the Alpine Club. He was an ardent volunteer, and obtained his majority. He was an enthusiastic yachtsman, and was as happy at his carpenter's bench as with his books. Reserved and quiet in manner as he was, many who met him for the first time may not have been able completely to understand him; but those who knew him recognised his sterling character.

C. STEWART KING
(former member A.C.).

RUDOLF LOCHMATTER.

1875-1923.

RUDOLF LOCHMATTER, the eldest surviving member of the well-known St. Niklaus family of guides, died on March 10, after an illness of a week only, at the comparatively early age of 48.

He obtained his certificate as a fully qualified guide when he was twenty-three years old, and it soon became evident that a new star had arisen in the guiding world. By reason of the brilliant qualities which he displayed, he was rapidly making a great name when at the end of 1900 his career was suddenly cut short by an unfortunate accident which deprived him of his left hand. He did not climb again until 1906, when he joined a Genevese friend, Monsieur Gouy, in a short season, and in 1907 he became second guide to Mr. Somers and myself, and accompanied us every season afterwards (excepting of course during the war).

The first names of English climbers which occur in his book are Mr. W. M. Baker (an old friend of his father) and Colonel Strutt, these being followed by those of Mr. Littledale, Mr. A. B. Thorold, and Mr. Austin Clover. With Mr. Thorold and Josef Pollinger he took part in a remarkable first ascent of the Grands Charmoz from the Mer de Glace, and with Mr. Clover he accomplished the first descent of the Weisshorn by the N. arête. In addition to these, he achieved many of the great climbs in various districts. From 1906 onwards he also did a considerable amount of climbing with Mr. Somers and myself and one or two Genevese gentlemen who were interested in him. He accompanied Mr. Winthrop Young as sole guide in a traverse of the Matterhorn, and in October last was chosen by Messrs. Charles and Edouard Gos as one of the guides on a remarkable traverse of the same peak, on which occasion a series of cinematograph pictures was taken. A few days later he took part with the same gentlemen in an attempt to ascend the Edelspitze (the St. Niklaus Gabelhorn), which was frustrated by bad weather.

Rudolf Lochmatter was a very handsome fellow (a fact of which he was singularly unconscious), rather under medium height, lightly built and slender. He was a first-rate snow- and ice-man, and in rock-climbing had probably no superiors, the ease and grace with which he climbed making his movements a constant delight to watch. After his accident he learned to make a clever use of his maimed arm, and his remarkable balance and sureness of foot made one forget that he had lost one of his hands. The best testimony of his powers which I can give is the fact that when I consulted old Christian Jossi on the question of Rudolf joining us as second guide, my old friend merely remarked that he would prefer him to most guides with two hands.

Of his personal character I cannot speak too highly. The mishap which deprived him of a hand would have soured the dispositions

of many guides of his calibre, but although it saddened such a keen lover of climbing as he was, Rudolf met his misfortune with the greatest fortitude, and when he learned that he was to join us as second guide, his intense satisfaction was a joy to witness. His extraordinary thoughtfulness, unselfishness, modesty and intelligence made him the most delightful companion imaginable. In short, he was one of nature's noblemen, and more than that I cannot say.

SYDNEY SPENCER.

THE ALPINE CLUB LIBRARY.

The following additions have been made to the Library:—

Club Publications.

Akad. Alpen-Ver. Berlin. 29. Jahresb. $9\frac{1}{2} \times 6\frac{1}{2}$: pp. 20: plates. 1922
First ascents, 1922:—*J. Heidenhain*, alone, Zwölfer N.-Grat: *G. Künne*, Graftalsp. Roter Schragen fr E. Ruiskogel: *P. Borchers*, Aig. de Toule d. N.W. arête.

Blgarski Tyrist. Vol. 15, nos. 1-2. 12×9 : pp. 32: ill. Sept., Oct. 1922
No. 1 contains Mlle d'Angeville's ascent of Mont Blanc.

C.A.F. La Montagne. Rev. mensuelle. 18e année. 9×6 : pp. xvi, 272: ill. 1922

Among the articles are:—*J. de Lépiney*, Premières ascensions dans la région du Col de Blaitière (first ascent Aug. 12, 1920: *J. de Lépiney* and *P. Chevalier*, attempt and ascent of the Aiguille): *F. Oblat* and *J. A. Morin*, Ascensions d'hiver en Corse (Cinque Fratelli, N. and S.; Mte Cinto; Clochetons de Calasima): *J. Arlaud*, Aux Pyrénées désertes: *H. Vallot*, La crête du Mont Joly au Col du Bonhomme: *E. Gaillard*, Les noms des heures dans la toponymie alpine (e.g. Neuner Kofel, Elfer Kofel, Eisner Kofel; Cima Dievi, Dodici; du Midi; Bec de None, de Mezzodi; Aig. de Tierce): *J. Vallot*, Thirty-fourth and last ascent of Mont Blanc, 1920: *J. Capedon* and *J. Escarra*, Itinéraires de l'Aiguille Doran: *H. Noirel*, Levés à gde échelle dans la région d. Alpes: *J. Blanchet*, Autour du Pic du Midi d'Ossau: *P. Dalloz*, *J. and T. de Lépiney*, Aig. du Peigne N.W. and W. arête: *M. A. Verney*, Face N.W. du Gr. Marchet, first descent 1921: *R. Richard*, Les Dents de Lanfon (with Bibliography of first ascents).

Among new ascents are:—*L. and H. Bordeaux*, Tête de la Ciclaz, N. arête: *B. Leclercq* and *J. Savard*, Pte de Thorens S. and W. arêtes: *P. Guiton*, Pic d'Olan by N.W. face: *J. P. Loustalot* and *L. Zwingelstein*, Pierra Menta, 1922: *M. Lughinbuhl* and *L. Zwingelstein*, Mont Aiguille S.W. face.

— **Annuaire de poche.** Guide et Porteurs. Chalets et Refuges. $7 \times 4\frac{1}{2}$: pp. 64. 1922

— **Canigou.** Bulletin. $8\frac{3}{4} \times 5\frac{1}{2}$: pp. 151. 1894

— **Notice sur les excursions les plus intéressantes des Pyrénées-orientales.** $8\frac{1}{4} \times 5\frac{1}{4}$: pp. 24. 1904

C.A.I. Rivista. Vol. 41. 10×7 : pp. 258: ill. 1922

Among the articles:—*A. Corti*, Gruppo d. Disgrazia: *A. Brian*, Laghetti dell'Alta Valsesia: *G. Gallina*, Mte Corno: *G. Cibrario*, Gruppo d. Limbara.

First Ascents, 1920-22:—*M. Strumia*, Becca di Monciair N. face: *R. Negri*, Fünffingersp.: Anulare S. face: *M. Baratono*, etc., Aig. Verte ouest de Valsorey descent E., guideless: Becca di Nona N. face, guideless: *U. Balestreri*, Pierre Menue S. face: *A. Frisoni*, P. d. Saette, 1917, N. arête: tr Forcella Plent: *A. Bonacossa*, Mt. Dolent S.W. face: *G. A. De Petro*, M. Faroma S.W. arête, Denti di Vessona, M. Pisonet fr S., Becca del Merlo